

# Osptek Display

## TFT LCD SPECIFICATION

Model No:

**YDP096B001-V1**



*osptek*<sup>®</sup>

## Revision Record 修改记录

Rev No 版本号	Date 时间	Description 内容
V.0	2021-7-26	首次发行



# CONTENTS 目录

## Revision Record

## Contents

ITEM	PAGE
1. General Specifications 基本规格	4
2. Pin Assignments 接口定义描述	5
3. Electrical Specification 电气特性	6-8
3.1 Absolute Maximum Ratings 极限参数	6
3.2 Typical Operation Conditions 典型工作条件	7
3.3 Backlight Circuit Characteristics 背光电气特性	8
3.4 LCD Current Consumption 液晶面板功耗	8
4. Optical Specification 光学规格	9
4.1 LCM Optical Characteristics 液晶模组光学特性	9
4.2 Measurement system 测量系统	10
5. Mechanical Drawing 模组图	11
6. Reliability Test Items 可靠性测试项目	12
7. Packing and Storage Specification (Reference only) 包装规格 (仅供参考)	13 -14
8. Announcements 注意事项	15

osptek®

## 1.General Specifications 基本规格

No.	Item 项目	Specification 规格	Unit 单位	Remark
1	LCD Size 液晶面板尺寸	0.96	inch	-
2	Panel Type 面板类型	IPS	-	-
3	Resolution 分辨率	80 x RGB x 160	Pixel	-
4	Display Mode 显示模式	Normally Black		-
5	Number of Colors 颜色数量	262K	-	-
6	Viewing Direction 使用视角	All	-	Note1
7	NTSC 色彩饱和度	60%	-	Typ.
8	Contrast Ratio 对比度	800	-	
9	Luminance 亮度	350	cd/m2	Typ.
10	Module Size 模组尺寸	13.5(H)x27.95(V)x1.46(D)	mm	Note1
11	Panel Active Area 可视区域	10.8x21.7	mm	Note1
12	Pixel Pitch 像素尺寸	0.135(H) x 0.1356(V)	mm	-
13	Pixel Arrangement 像素排列	RGB-stripe		-
14	Weight 重量	TBD	g	-
15	Driver IC 驱动芯片	GC9107	-	-
16	Driver IC RAM Size 记忆体		bit	-
17	Light Source 背光源	1 white LEDs	-	-
18	Interface 接口方式	4 SPI	-	-
19	Operating Temperature 工作温度	-20~+70	°C	-
20	Storage Temperature 存储温度	-30~+80	°C	-

Note 1: Please refer to the mechanical drawing ;

注 1 : 请参照模组图 ;

## 2.Pin Assignments 接口定义

Pin No. Pin 序号	Symbol 符号	Function 功能描述
1	TP0	TP interface
2	TP1	TP interface
3	SDA	Serial data input pin in serial interface operation 串行数据输入/输出引脚。
4	SCL	Serial interface clock 串行时钟引脚。
5	RS	Register select signal. 0:index register; 1:data register。注册选择信号。
6	RESET	Chip reset signal 复位。
7	CS	Chip select pin 片选信号。
8	GND	Ground 接地。
9	NC	空脚
10	VCC(2.8V)	Analog Power Supply for LCM ( 2.8V ) 系统输入电压 2.8V。
11	LED-	Backlight cathode 背光负极输入端。
12	LED+	Backlight anode 背光正极输入端。
13	GND	Ground 接地。

osptek®

### 3. Electrical Specification 电气特性

#### 3.1 Absolute Maximum Ratings 极限参数

Item	Symbol	Unit	Value
Supply voltage	VCI	V	-0.3~+4.6
Supply voltage(Logic)	IOVCC	V	-0.3~+4.6
Digital Operating voltage	VCORE	V	-0.3~+2.0
Driver supply voltage	VGH-VGL	V	17.5~+28.0
Logic input voltage range	VIN	V	-0.3~VDDI+0.3
Logic output voltage range	VO	V	-0.3~VDDI+0.3

*Note: If the absolute maximum rating of even is one of the above parameters is exceeded even momentarily, the quality of the product may be degraded. Absolute maximum ratings, therefore specify the values exceeding which the product may be physically damaged. Be sure to use the product within the range of the absolute maximum ratings.*

The logo for Osptek, featuring a stylized bird-like graphic above the word "osptek" in a lowercase, sans-serif font with a registered trademark symbol.

### 3.2 Typical Operation Conditions 典型工作条件

Item	Symbol	Unit	Condition	Min.	Typ.	Max.	Note
Power and Operation Voltage							
Analog Operating Voltage	VCI	V	Operating voltage	2.5	2.8	3.3	Note2
Logic Operating Voltage	IOVCC	V	I/O supply voltage	1.65	2.8	3.3	Note2
Digital Operating voltage	VCORE	V	Digital supply voltage	-	1.8	-	Note2
Gate Driver High Voltage	VGH	V	-	10.0	-	15.0	Note3
Gate Driver Low Voltage	VGL	V	-	-13.0	-	-7.5	Note3
Driver Supply Voltage	-	V	VGH-VGL	17.5	-	28.0	Note3
Input and Output							
Logic High Level Input Voltage	VIH	V	-	0.7*V <sub>DDI</sub>	-	V <sub>DDI</sub>	Note1,2,3
Logic Low Level Input Voltage	VIL	V	-	V <sub>SS</sub>	-	0.3*V <sub>DDI</sub>	Note1,2,3
Logic High Level Output Voltage	VOH	V	IOL=-1.0mA	0.8*V <sub>DDI</sub>	-	V <sub>DDI</sub>	Note1,2,3
Logic Low Level Output Voltage	VOL	V	IOL=1.0mA	V <sub>SSR</sub>	-	0.2*V <sub>DDI</sub>	Note1,2,3
Logic High Level Input Current	I <sub>IH</sub>	uA	-	-	-	1	Note1,2,3
Logic Low Level Input Current	I <sub>IL</sub>	uA	-	-1	-	-	Note1,2,3
Logic Input Leakage Current	I <sub>LEA</sub>	uA	V <sub>IN</sub> =V <sub>DDI</sub> or V <sub>SSR</sub>	-0.1	-	+0.1	Note1,2,3
Source Driver							
Gamma Reference Voltage	VREG	V	-	2.92	-	5.19	-

### 3.3 Backlight Circuit Characteristics 背光功耗

Item	Symbol	Min.	Typ.	Max.	Unit
LED Current 背光电流	$I_B$		15	-	mA
LED Voltage 背光电压	$V_f$	-	3.0	3.2	V
Power Consumption 功耗	$P_{BL}$	-	-	-	mW

### 3.4 LCD Current Consumption 液晶面板功耗

Item	Symbol	Typ.	Max.	Unit
Full Mode 正常模式	VCI	-	-	mA
测试条件：VCI=2.8V，IOVCC=2.8V； Interface 驱动类型：行翻转或者列翻转； TN Type=>All Black Pattern. TN型液晶面板=>黑色画面； IPS Type=>All White Pattern. IPS型液晶面板=>白色画面； Temperature：25°C；温度：室温25摄氏度；				
Sleep Mode 休眠模式	VCI	-	-	uA
测试条件：VCI=2.8V，IOVCC=2.8V； DC/DC converter is enabled. Internal oscillator is started and panel scanning is started. 除IC内部晶振和面板扫描外，其他功能都暂停工作； Temperature：25°C；温度：室温25摄氏度；				

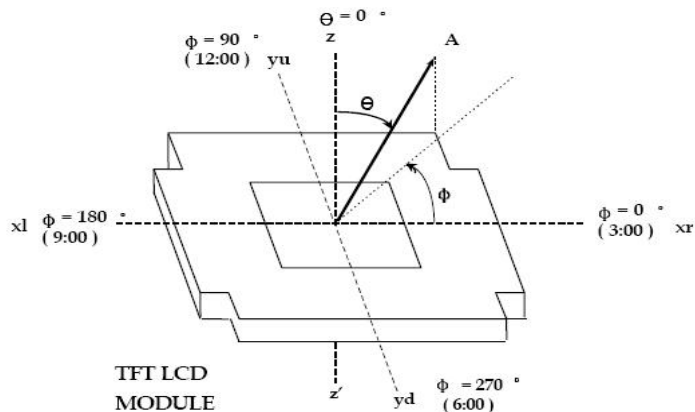
## 4. Optical Specification 光学参数

### 4.1 LCM Optical Characteristics 液晶模组光学特性

Item		Symbol	Condition	Min.	Typ.	Max.	Unit
Viewing Angle Range 视角	Left	$\theta_L$	$CR \geq 10$	-	85	-	degree
	Right	$\theta_R$		-	85	-	
	Top	$\theta_T$		-	85	-	
	Bottom	$\theta_B$		-	85	-	
Response Time 响应时间		$T_{on}+T_{off}$	$\theta=\Phi=0^\circ$	-	30	40	ms
Contrast Ratio 对比度		CR	$\theta=\Phi=0^\circ$	700	800	-	-
Luminance 亮度		L	$\theta=\Phi=0^\circ$	-	350	-	cd/m <sup>2</sup>
Color Chromaticity (CIE1931) 色坐标	White	$W_x$	Normal $\theta=\Phi=0^\circ$	-0.02	-	+0.02	-
		$W_y$			-		
	Red	$R_x$			0.655		
		$R_y$			0.318		
	Green	$G_x$			0.288		
		$G_y$			0.545		
	Blue	$B_x$			0.138		
		$B_y$			0.121		
Uniformity 均匀度		$U_L$	$\theta=\Phi=0^\circ$	80	-	-	%
Flicker 闪烁		-	-	No Visible			-

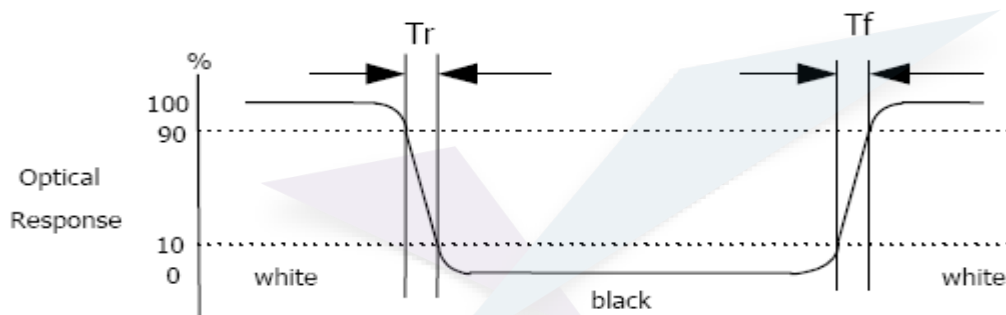
## 4.2 Measurement system 测量系统

### 4.2.1 LCM Viewing Angle



Viewing angle is the angle at which the contrast ratio is greater than 10. The angles are determined for the horizontal or x axis and the vertical or y axis with respect to the z axis which is normal to the LCD surface.

### 4.2.2 Response time



Response time is the time required for the display to transition from white to black (Rising time,  $T_r$ ) and from black to white (Falling time,  $T_f$ ) for additional information.

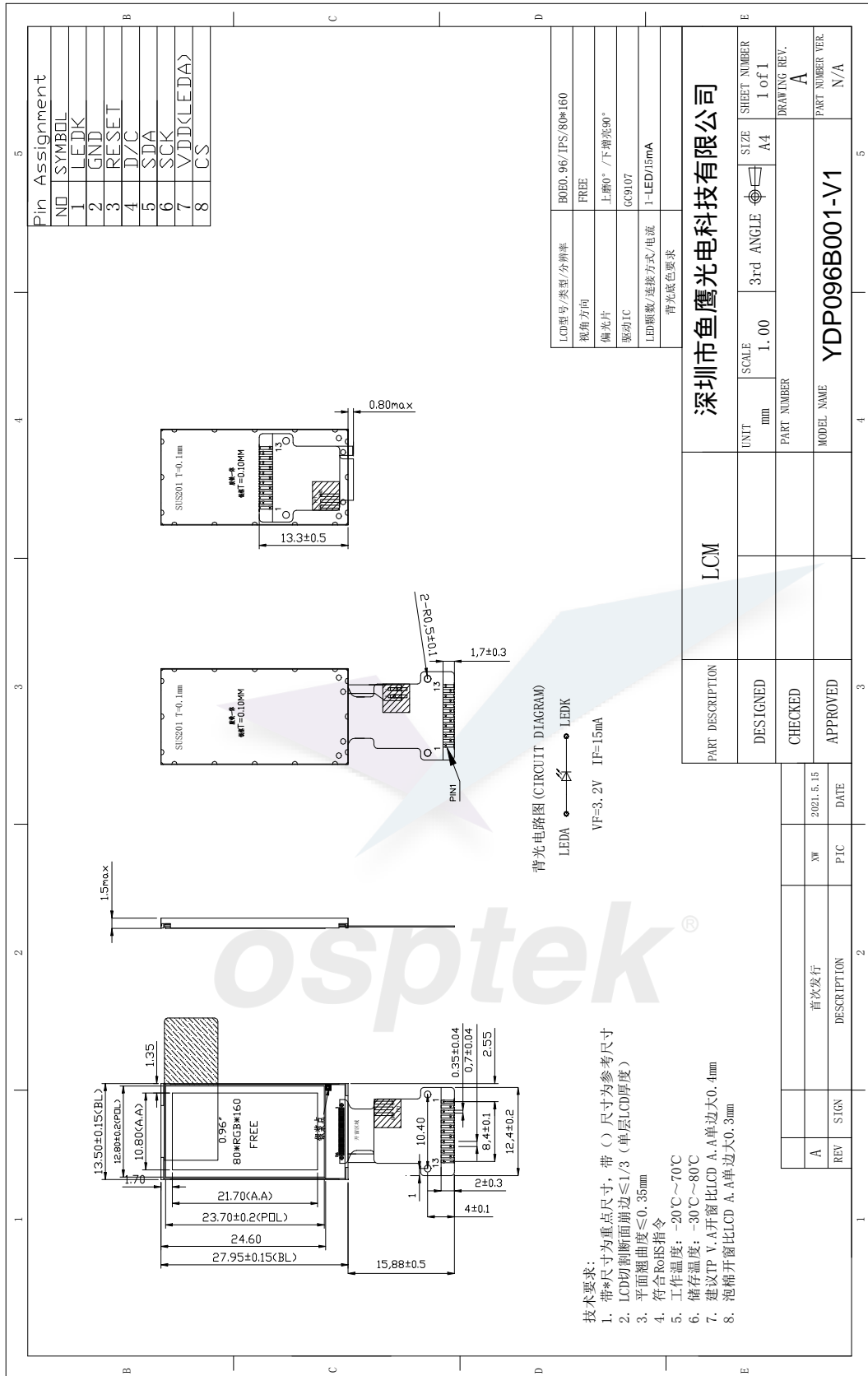
### 4.2.3 Contrast Ratio (CR)

Contrast Ratio (CR) is defined mathematically as:

$$\text{Contrast Ratio} = \frac{\text{Surface Luminance with all white pixels}}{\text{Surface Luminance with all black pixels}}$$

Surface luminance is the center point across the LCD surface 500mm from the surface with all pixels displaying white.

# 5. Mechanical Drawing 模组图



## 6. Reliability Test Items 可靠性测试项目

Test Item 测试项目	Test Condition 测试条件	Test result determinant gist 实验结果判定
High temperature storage 高温存储	80±3°C , 24H ;	Inspection after 2~4hours storage at room temperature, the sample shall be free from defects: 试验结束后,已测试的LCD样品必须在室内正常温湿度环境下放置2~4个小时以上才能进行功能和外观检查,样品不允许有以下缺陷: 1.Air bubble in the LCD; 模块中有气泡; 2.Non-display; 不显示; 3.Glass crack; 玻璃破碎; 4. The electrical characteristics requirements shall be satisfied. 需要满足模块电气性能。
Low temperature storage 低温存储	-30±3°C , 24H ;	
High temperature operation 高温运行测试	70±3°C , 24H ;	
Low temperature operation 低温运行测试	-20±3°C , 24H ;	
High temperature /humidity 高温高湿	60°C±3°C,90%±3%RH , 24H ;	
Thermal Shock 冷热冲击	-30°C/0.5h~+80°C/0.5h for a total 24 cycles ;	
Vibration Test 振动测试	Frequency 10Hz~55Hz~10Hz Amplitude : 1.5mm, X , Y , Z direction for total 1H ; (Packing condition)	
ESD test 静电测试	±2KV, Human Body Mode, 150pF/330Ω ; ±8KV, Air Mode, 150pF/330Ω ;	

Remark: 注意 :

1. The test samples should be applied to only one test item.

每个被测试的模块只能用于其中的一个测试项目。

2. Sample size for each test item is 2pcs.

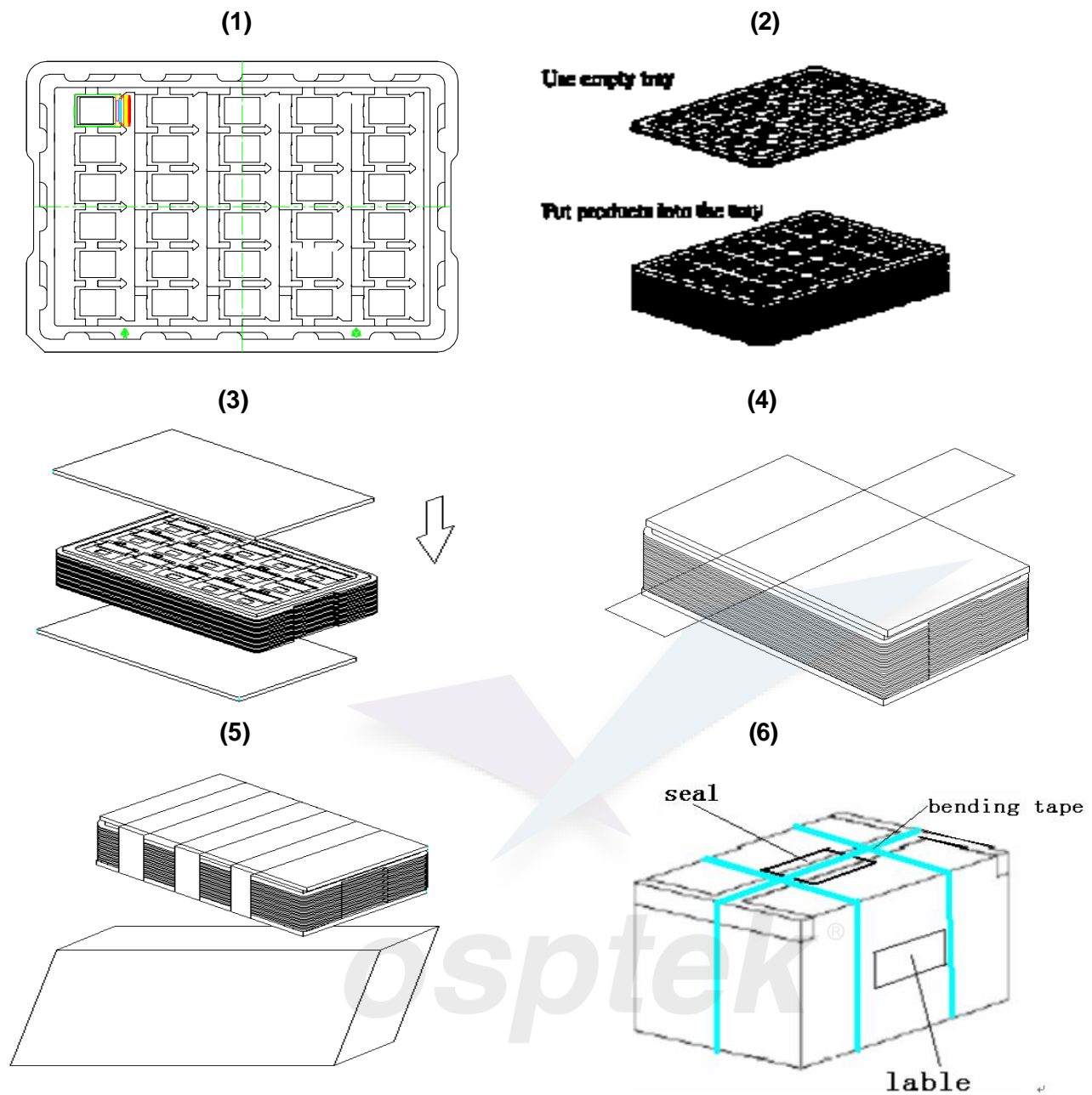
每个测试项目的样品数量为2片。

3. Failure Judgment Criterion: Basic Specification, Electrical Characteristic, Mechanical Characteristic, Optical Characteristic.

故障判断标准:基本规格,电气特性,机械特性,光电特性。

## 7. Packing and Storage Specification(Reference Only) 包装存储

### 7.1 Packing Method 包装方法



1. Put module into tray cavity. 把模块放进托盘.
2. Tray stacking. 托盘叠装.
3. Put 1 foam under the tray stack and 1 foam above. 在托盘上下放卡板.
4. Fix the cardboard to the tray stack with adhesive tape. 绑胶带.
5. Put the tray stack into carton. 把邦好的托盘放进纸箱.
6. Carton sealing with adhesive tape. 封纸箱.

## **7.2 Storage Method 存储方法**

1. Store in an ambient temperature of  $23^{\circ}\text{C}\pm 5^{\circ}\text{C}$ , and in a relative humidity of  $55\%\pm 15\%$ . Don't exceed 12 months and expose to sunlight or fluorescent light.

存储环境温度为  $23\pm 5^{\circ}\text{C}$ ，相对湿度为  $55\%\pm 15\%$ ，存储不能超过 12 个月，不要长时间暴晒。

2. Store in a clean environment, free from dust, active gas, and solvent.

存储在一个干净的环境，不受灰尘，活性气体和溶剂污染。

3. Store in antistatic container.

存储在防静电环境。



## 8. Announcements 注意事项

1. Do not attempt to disassemble or process the LCD module.

请勿拆卸液晶显示模块。

2. Do not make extra holes on the printed circuit board, modify its shape or change the positions of components to be attached.

不要在印制电路板上钻额外的孔，修改形状或更改印制线路板上元件的位置。

3. Except for soldering the interface, do not make any alterations or modifications with a soldering iron; Ensure welding temperature at 320 ° C to 350 ° C, the welding time control within the 10 s, welding note don't stay too long in the same place to avoid scald FPC.

除焊接接口外，不要用烙铁做任何更改；焊接温度保证在 320°C-350°C，焊接时间控制在 10S 以内，焊接时注意不要在同一处停留时间太久以免烫伤 FPC。

4. Other matters in not clear before use, please contact our staff to guide.

其他事项在不清楚使用之前，请联系我司人员指导进行。

